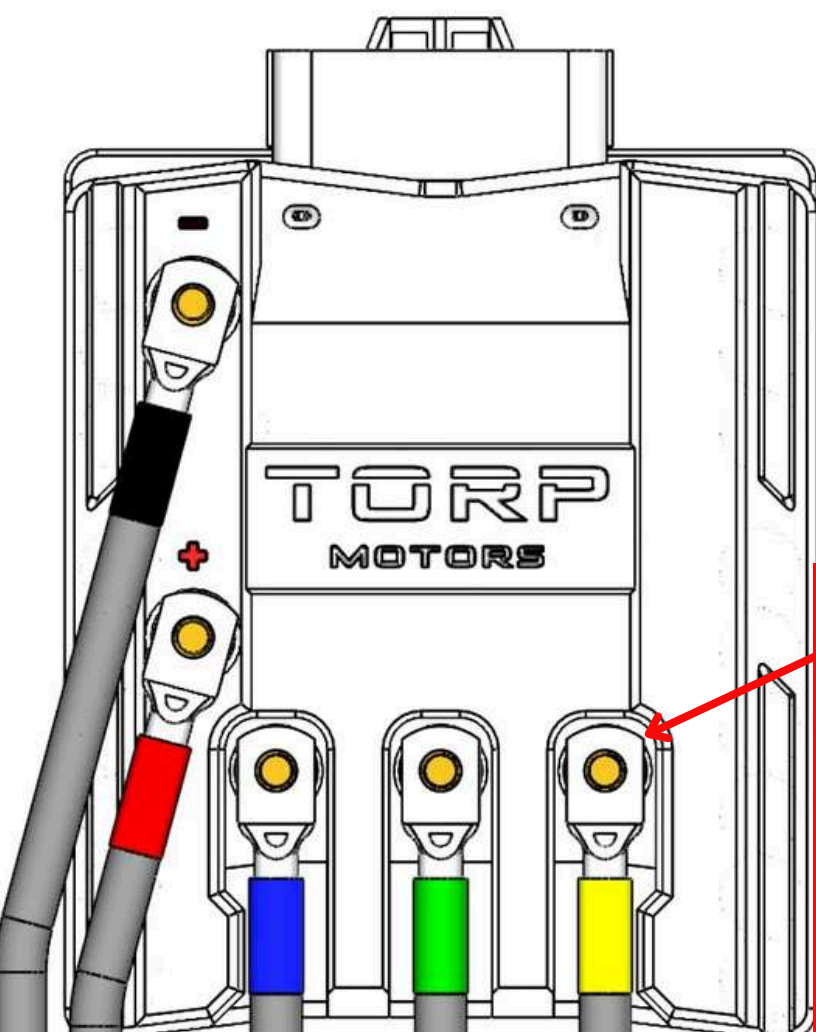


# QUICK START GUIDE

Make sure you follow these instructions for a quick start with the TC1000 for SurRon Light Bee and Talaria MX3 / MX4

Connect the wires as shown below! Use only screws and tools included in the box. The product must be used in combination with the **circuit breaker or fuse** at all times! In case of incorrect installation, you will lose the Warranty and cause serious damage to the product!

TC1000 Controller is not an original SurRon/Segway/Talaria part so you are using it at your own risk.



For proper installation watch the Installation Video:

SurRon LB



Talaria





M6 screws with Washers

**The Torque that should be used is between 4 and 4.5 Nm!**

Only tools included in the package must be used for installation! The use of electric fasteners is not allowed as they can damage the controller. Any damage caused by not tightening the bolts enough or exceeding the max torque of 4.5 Nm and/or using tools different from the ones included in the package, is not covered by warranty!




## Power Wires

Make sure to connect:

- The **red battery wire** to the positive (+) electrode 
- The black battery wire to the negative (-) electrode 

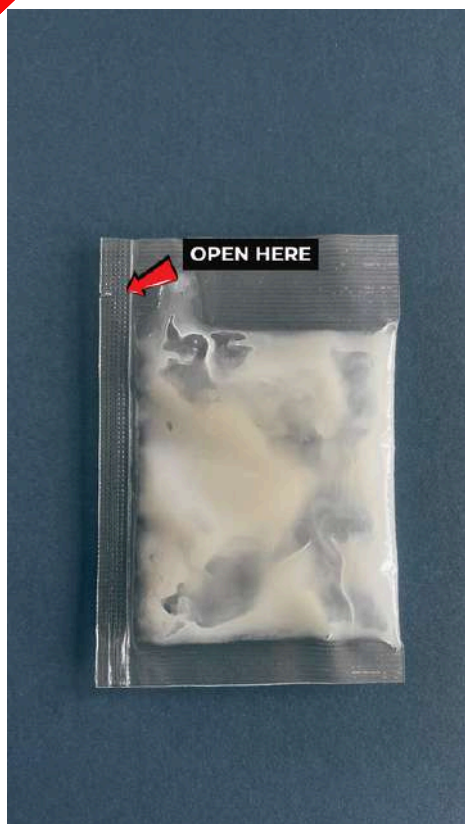
## Phase Wires\*

Make sure to connect:

- The **Blue motor** wire to the the letter B 
- The **Green motor** wire to the the letter C 
- The **Yellow motor** wire to the letter Y 

**\*Not connecting phase wires correctly can cause the bike to go in reverse!**

# CONNECTING THE WIRING.

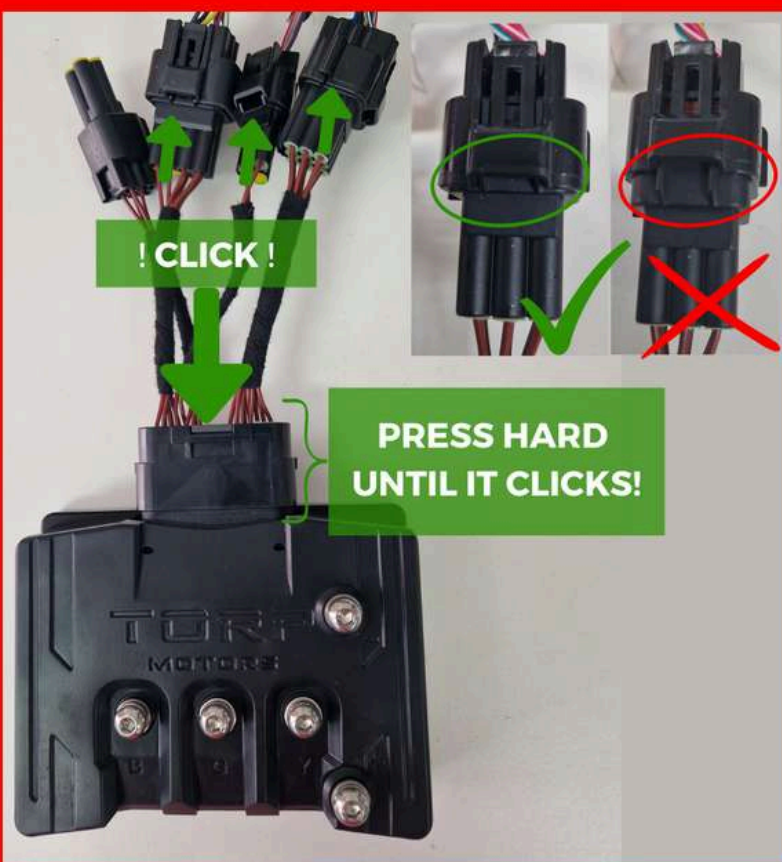


Before installing the controller on your bike, make sure to apply the silicone grease included in your package to the controller's main connector.

This will prevent moisture from entering and damaging the connector.

After you apply the grease as shown in the photo, press the main connector hard, until you hear **a click!**

If you ever need to unplug the main connector in the future (and dielectric grease was previously applied) first clean off the old grease with alcohol contact cleaner and once dry, reapply the dielectric grease.



## VERY IMPORTANT!

When pressed together, all connectors **must** make a **clicking sound!**

Especially, make sure that the **main the connector is pressed hard and clicks when pressed!**

When connectors are not properly pressed together, dirt and moisture can enter them, causing the controller irreparable damage!

Improper installation may void your warranty.

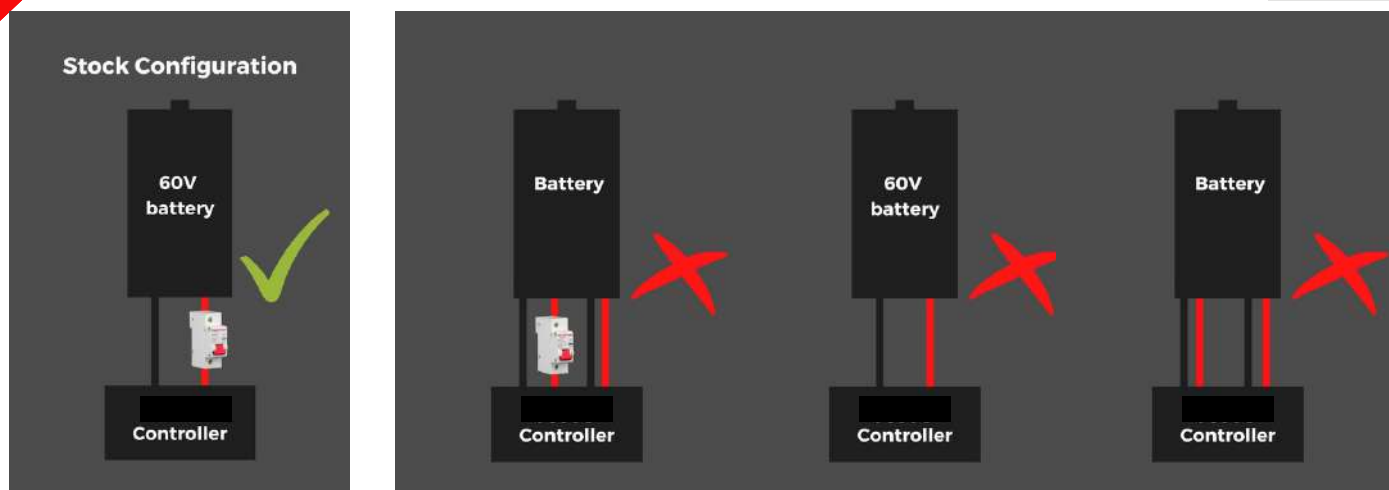
Follow the instructions carefully to maintain coverage.

Modifying a stock electric vehicle can make it non-compliant with local road safety regulations. It's crucial to consult experts or authorities before any modifications to ensure road legality.

# ALWAYS USE A CIRCUIT BREAKER (FUSE) WITH YOUR CONTROLLER!



LEARN MORE  
HERE



The TC1000 controller must always be used with a stock SurRon/Segway circuit breaker (fuse)! Not using the circuit breaker is dangerous and can cause serious damage!

## USE TORP APP FOR SETUP.

### HOW TO CONNECT?

- Go to the Google Play Store (Android) or AppStore (IOS) & download the App to your smartphone.
- Allow the App to access the phone's location, photos & media & accept the Terms & Conditions.
- Put the key into the ignition & turn on your bike.
- The App will automatically detect your controller.
- Choose your controller from the list. The Bluetooth ID can be found on the label on the side of the controller.
- Now you are connected and can start setting up your controller.



**IMPORTANT:** After the installation make sure to follow the **CALIBRATION WIZARD** in the 5th screen of the Torp App!