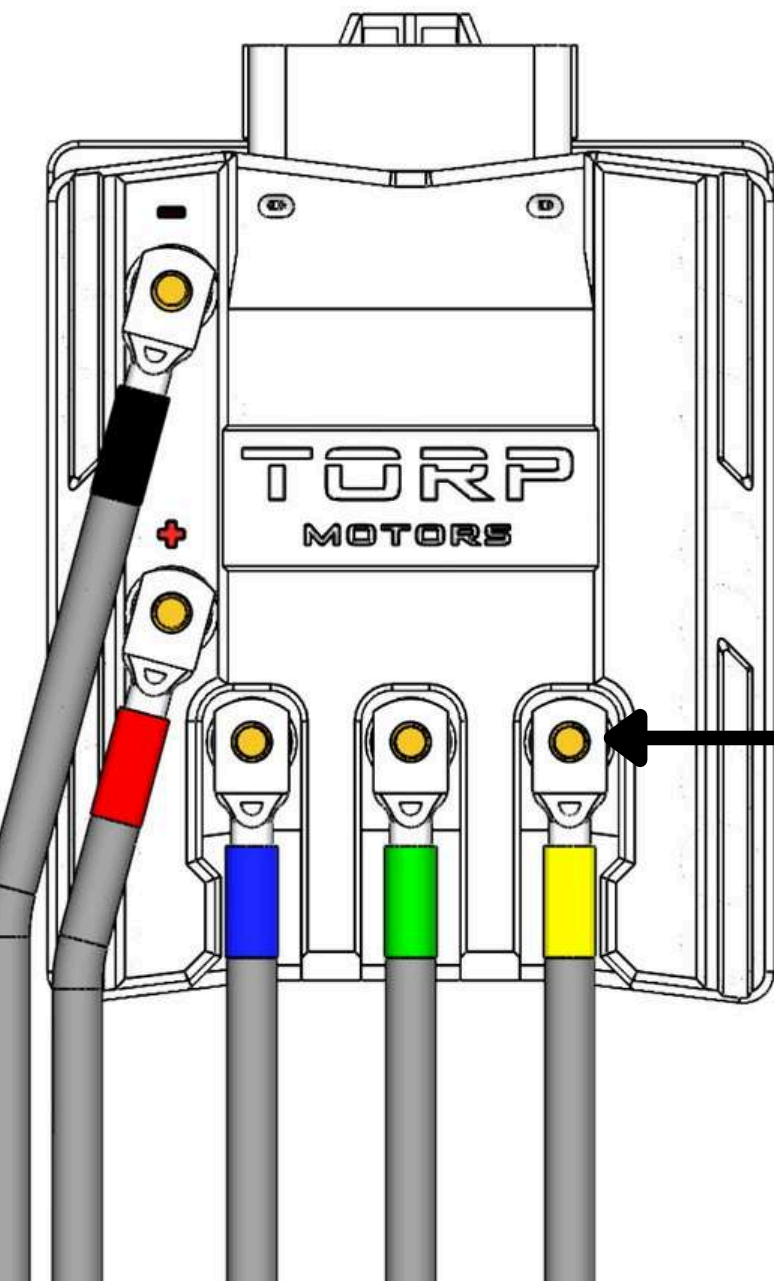


QUICK START GUIDE

Make sure you follow these instructions for a quick start with the TC1000 for SurRon Ultra Bee.



Connect the wires as shown below! Use only bolts and tools included in the box. The product must be used in combination with the **stock fuse** at all times! In case of incorrect installation, you will lose the Warranty and cause serious damage to the product!

TC1000 Controller is not an original SurRon/Segway part so you are using it at your own risk.






Power Wires **IMPORTANT**

Make sure to connect:

The **red battery wire** to the positive (+) electrode 
The **black battery wire** to the negative (-) electrode 

Phase Wires

Make sure to connect:

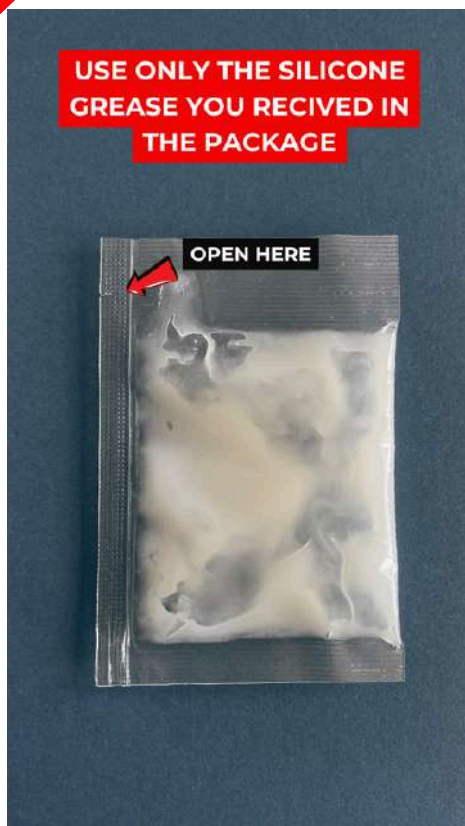
The **Blue motor wire** to the the letter B 
The **Green motor wire** to the the letter G 
The **Yellow motor wire** to the letter Y 

M6 bolts
with Washers
Max Torque 4.5 Nm

Use only tools included with the controller! Any damage caused by torque higher than 4.5 Nm and tools that are not part of the original package is not covered by warranty!

For additional help contact us at support@torp.hr

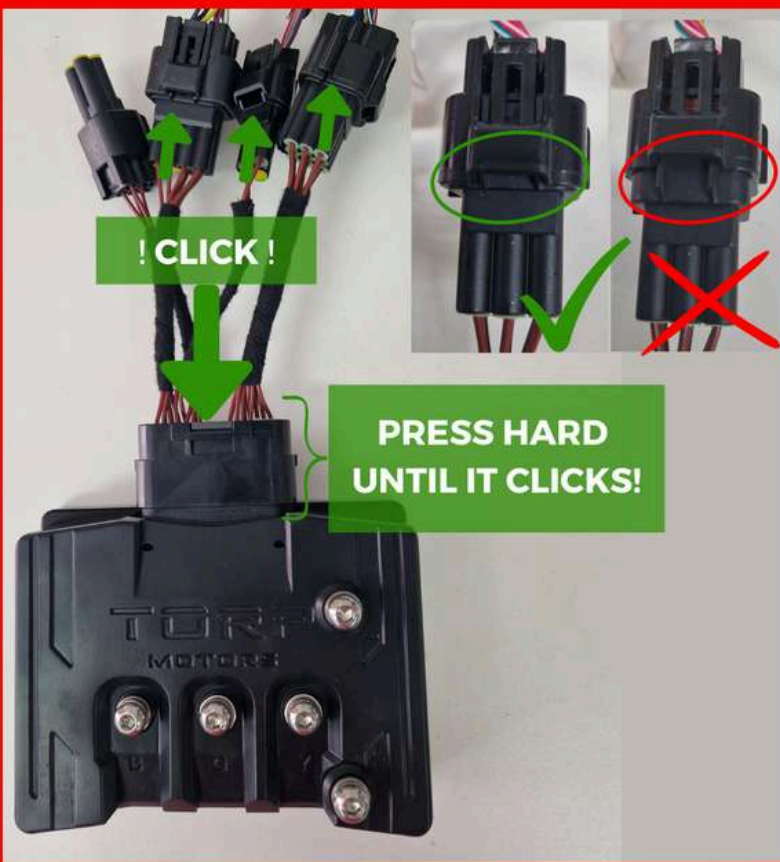
CONNECTING THE WIRING.



Before installing the controller on your bike, make sure to apply the silicone grease included in your package to the controller's main connector.

This will prevent moisture from entering and damaging the connector.

After you apply the grease as shown in the photo, press the main connector hard, until you hear a click!



VERY IMPORTANT!

When pressed together, all connectors **must** make a **clicking sound!**

Especially, make sure that the **main the connector is pressed hard and clicks when pressed!**

When connectors are not properly pressed together, dirt and moisture can enter them, causing the controller irreparable damage!

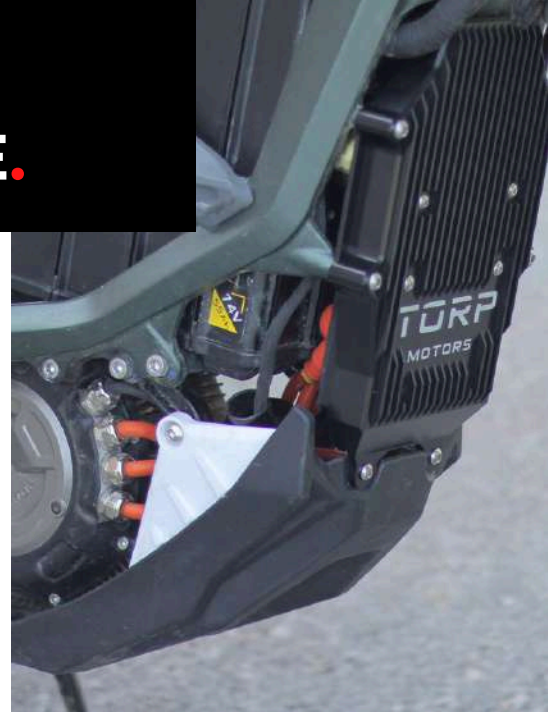
Improper installation may void your warranty.

Follow the instructions carefully to maintain coverage.

Modifying a stock electric vehicle can make it non-compliant with local road safety regulations. It's crucial to consult experts or authorities before any modifications to ensure road legality.

For additional help contact us at support@torp.hr

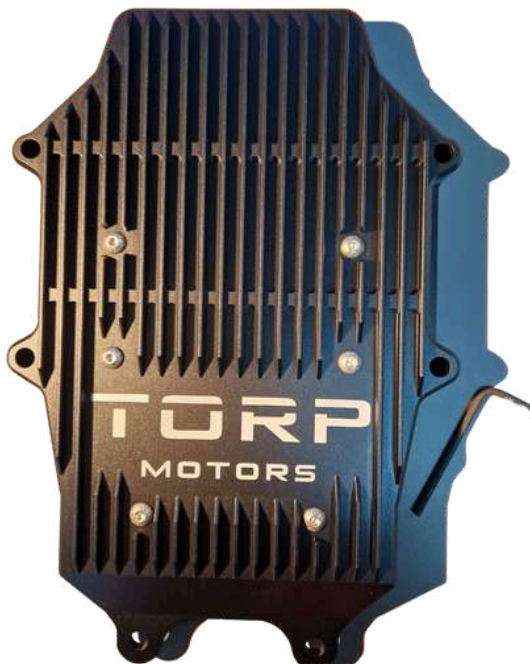
INSTALLING TC1000 ON SURRON ULTRA BEE.



The TC1000 for SurRon Ultra Bee comes with an aluminum Heat Sink.



Place the TC1000 inside the heatsink and align the 6 holes on its back to the 6 holes on the heatsink.



Use the 6 bolts and the hex-key (included in the package) to secure the controller to the heatsink.



Once you install the controller into the heatsink, make sure to correctly connect the wiring and phase wires.

CONNECTING THE TC1000 TO SURRON ULTRA BEE.



To connect the TC1000 controller to the SurRon Ultra Bee, **plug the three distinct connectors together, until you hear a click**, indicating secure connection. Each plug only fits its own socket, so you can't mix them up.

Scan the **QR code** for video instructions



USE TORP APP FOR SETUP.



HOW TO CONNECT?

- Go to the Google Play Store (Android) or AppStore (IOS) & download the App to your smartphone.
- Allow the App to access the phone's location, photos & media & accept the Terms & Conditions.
- Put the key into the ignition & turn on your bike.
- The App will automatically detect your controller.
- Choose your controller from the list. The Bluetooth ID can be found on the label on the side of the controller.
- Now you are connected and can start setting up your controller.

IMPORTANT: After the installation make sure to go to the 5th screen of the Torp App, click on the CALIBRATION button, select the ULTRA BEE as your motor type and follow the CALIBRATION WIZARD.

For additional help contact us at support@torp.hr